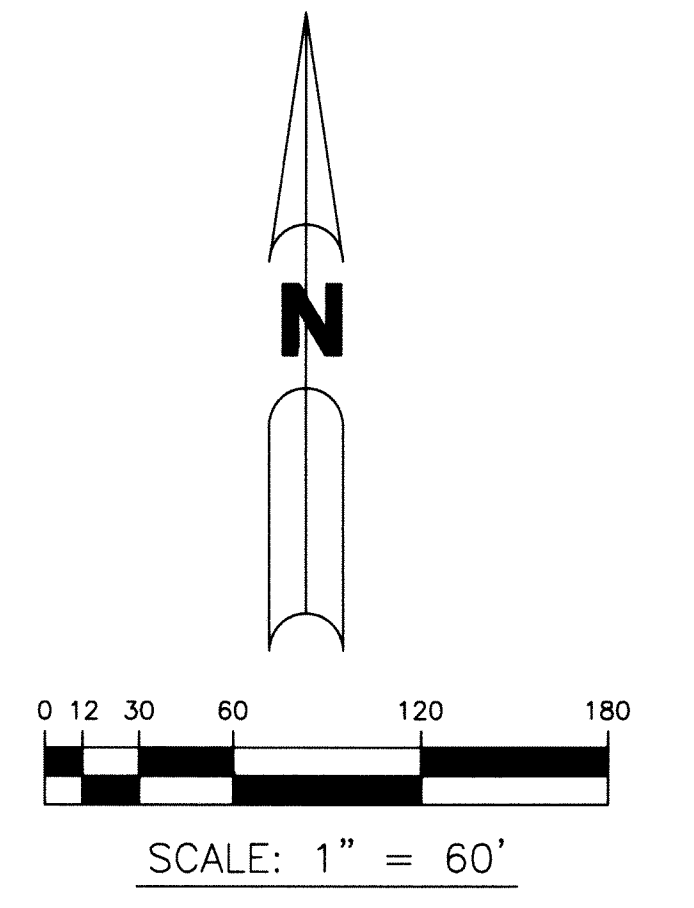
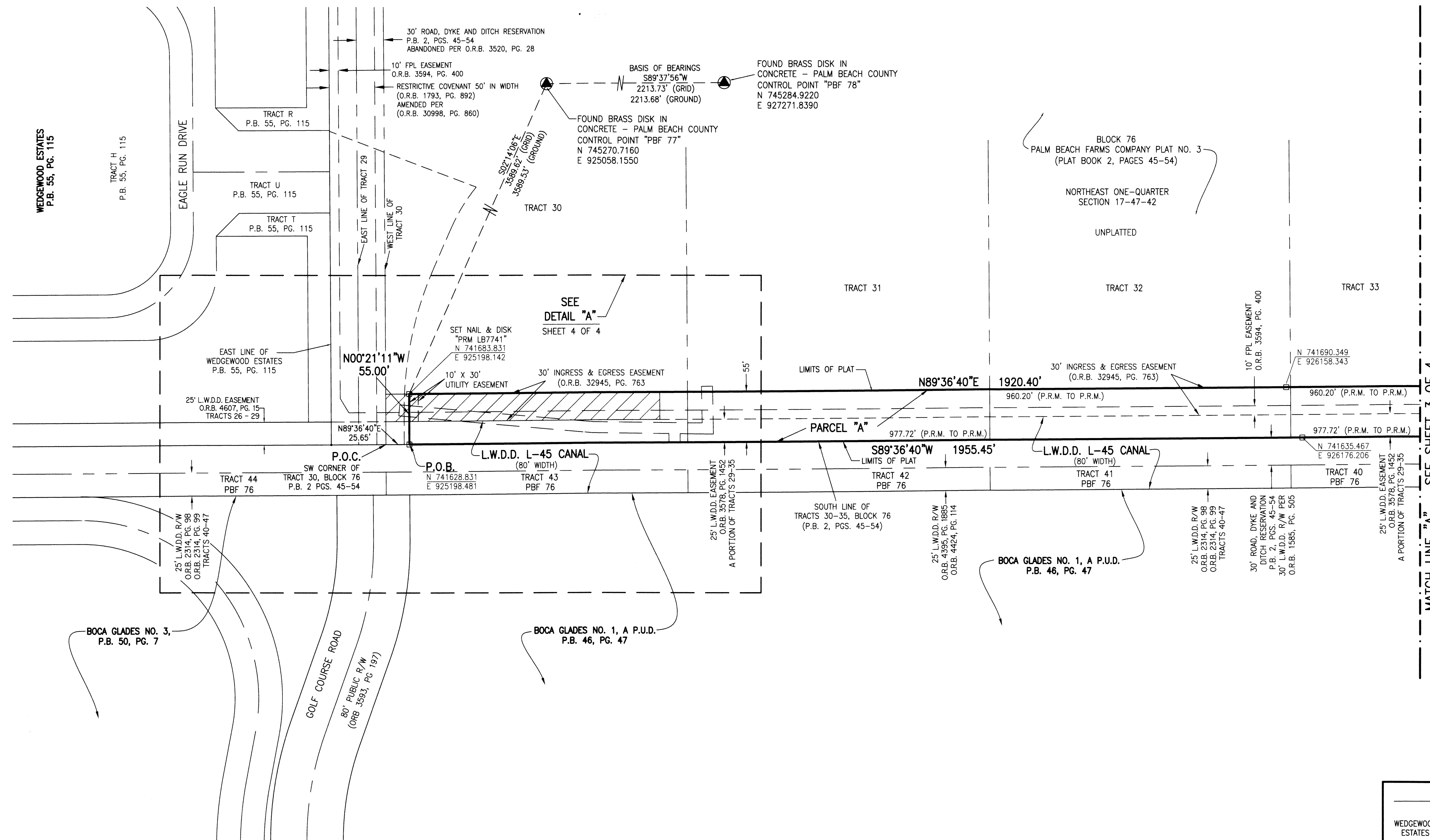


BOCA RATON GOLF COURSE - CITY PARCEL

BEING A REPLAT OF A PORTION OF TRACTS 30 THROUGH 35, BLOCK 76, PALM BEACH FARMS COMPANY PLAT NO. 3, ACCORDING TO THE PLAT THEREOF, AS RECORDED IN PLAT BOOK 2, PAGES 45 THROUGH 54, OF THE PUBLIC RECORDS OF PALM BEACH COUNTY, FLORIDA, LYING IN SECTION 17, TOWNSHIP 47 SOUTH, RANGE 42 EAST.

SHEET 2 OF 4

187



- LEGEND:**
- - SET PERMANENT REFERENCE MONUMENT 4"x4" CONCRETE MONUMENT WITH 1.5" DISK STAMPED L.B. #7741
 - - FOUND PERMANENT REFERENCE MONUMENT 4"x4" CONCRETE MONUMENT WITH 1.5" DISK STAMPED L.B. #7741
 - C - CENTERLINE
 - D.B. - DEED BOOK
 - F.P.L. - FLORIDA POWER & LIGHT
 - L.B. - LICENSED BUSINESS
 - L.W.D.D. - LAKE WORTH DRAINAGE DISTRICT
 - N.T.S. - NOT TO SCALE
 - O.R.B. - OFFICIAL RECORD BOOK
 - P.B. - PLAT BOOK
 - P.B.C.U.E. - PALM BEACH COUNTY UTILITY EASEMENT
 - PBF 76 - BLOCK 76 PALM BEACH FARMS CO. PLAT NO. 3, P.B. 2, PGS. 45-54
 - PG. - PAGE
 - P.O.B. - POINT OF BEGINNING
 - P.O.C. - POINT OF COMMENCEMENT
 - P.S.M. - PROFESSIONAL SURVEYOR AND MAPPER
 - P.U.D. - PLANNED UNIT DEVELOPMENT
 - P.U.D. - PLANNED UNIT DEVELOPMENT
 - R.D.&D. - ROAD, DYKE & DITCH RESERVATION
 - R/W - RIGHT-OF-WAY
 - S.T. - SURVEY TIE
 - U.E. - UTILITY EASEMENT

NOTES:
 COORDINATES SHOWN ARE GRID COORDINATES DATUM = NAD 83 (1990 ADJUSTMENT)
 ZONE = FLORIDA EAST ZONE
 LINEAR UNIT = U.S. SURVEY FEET
 COORDINATE SYSTEM = 1983 STATE PLANE TRANSVERSE MERCATOR PROJECTION
 ALL DISTANCES ARE GROUND (UNLESS OTHERWISE NOTED)
 SCALE FACTOR = 1.00002408
 PLAT BEARING = GRID BEARING
 GROUND DISTANCE X SCALE FACTOR = GRID DISTANCE

THIS INSTRUMENT PREPARED BY
 PERRY C. WHITE, P.S.M. 4213,
 STATE OF FLORIDA
 SAND & HILLS SURVEYING, INC.
 8461 LAKE WORTH ROAD, SUITE 410
 LAKE WORTH, FLORIDA
 33467 LB-7741

